

On The Disk...

A run-down of what's included on the free disk with this issue

Collated and tested by Mike Orriss

Subscribers to The Delphi Magazine receive a free disk with each copy, packed with goodies. This includes the source code and example files for all the articles in the current issue.

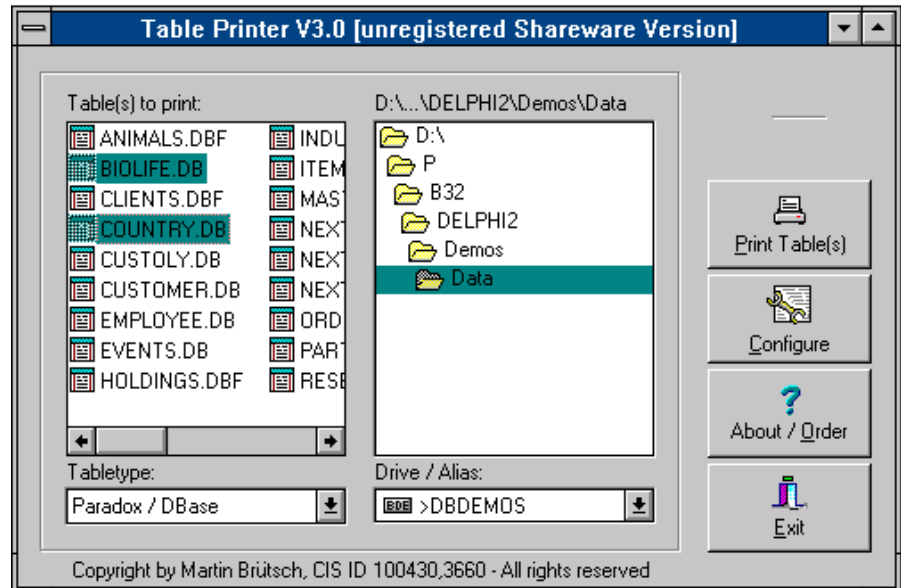
But, there's much more too! We've sifted through a great many tools, components and other Delphi add-ons to bring you some of the best shareware and freeware material available, as outlined below. The headings are the directory names where you will find the files on the floppy disk.

➤ ADROCK

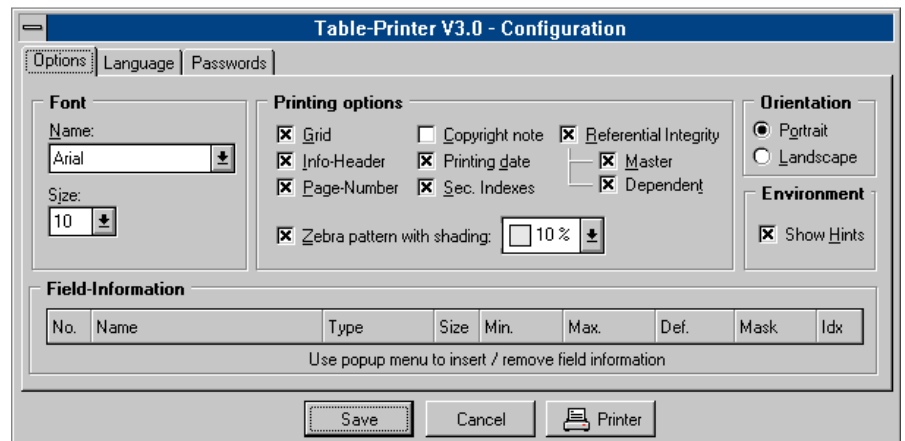
The TAdrockDates class (in the file ADDATE.ZIP) provides more than 65 functions that deal with dates. You can return periods between dates, in days, weeks, months, quarters, and years. There are functions that deal with boundary dates. You can add a number of units to a date (days, weeks, months, and years), extract parts from dates, and build dates with a simple function. The Help file provides a full listing of functions and comprehensive instructions.

The TAdrock3DCalendar component (in AD3DCAL.ZIP) allows an end user to select a date from a static calendar. Nearly 100 properties are available which, when used with the TAdrockDates class described above, allows you great flexibility when dealing with dates. The screenshot opposite illustrates a simple dialog form that has been created using the calendar and date class which allows the user to toggle between working and non-working days by just clicking on the appropriate cell. The data is stored in a 'sparse' Paradox table which just records non-working weekdays and working weekends.

Both components are available with or without source code for 16bit and/or 32bit.



➤ Above and below: TablePrinter 3.0 in action



➤ AUTODRAW

The Delphi 2 only AutoDraw grid components extend the TDrawGrid and TStringGrid classes in a variety of ways. The two components included in the project are TadDrawGrid and TadStringGrid. AutoDraw includes a custom columns property editor which provides a central dialog to specify column attributes, such as justification, font attributes, title captions, width, and more. The columns editor is similar in design to the Delphi TDBGrid columns editor, but has some new features. See the Overview topic in the help file for

details. AutoDraw includes a nice little demonstration project which shows off some of the features. You should be sure to compile and run the demo (see the screenshot on the cover for a preview!). AutoDraw itself is freeware. The source code, which contains over 1,100 lines of comments and six lengthy *Programmer's Notes*, is available for a nominal fee.

➤ ROLLER

The RollerList component is a fun alternative to selecting small lists of strings to the standard combo and list box controls. Fruit machine

fanatics step this way – this is designed just for you. (see the screenshot on the cover). The component is freeware and the source is available on request from John Pullen (bluebird@dircon.co.uk)

➤ **TABPR30**

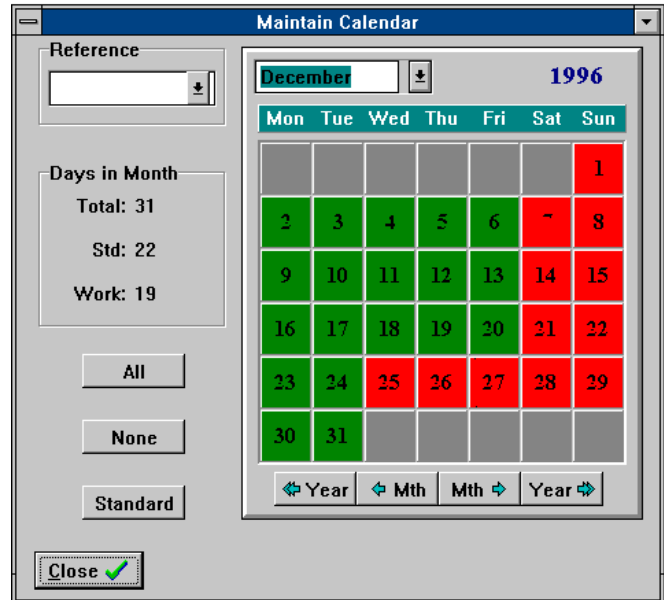
This is a useful utility that can print table structures and indices. TablePrinter is available in 16bit and 32bit versions and TABPR30.EXE on the disk is a fully functional 32bit Win95/NT version which differs from the registered version by having 'EXAMPLE' printed on all the reports. There are many print options available, as can be seen from the screen shots opposite.

New Archive Expander Utility

Also included on the disk with this issue is Version 2.0 of the XAll command line utility which expands all ZIP and LZH format archives. The new version includes the option to view the contents of archives without extracting them and also now correctly extract files from ZIP archives containing subdirectories. XAll is Freeware and may be distributed freely.

Important Note!

Always, but *always* make a backup copy of your COMPLIB.DCL file (in directory delphi\bin) *before* you take the plunge and install *any* new component into Delphi! Sometimes component installation can trash your COMPLIB.DCL and you will then be left with an inoperative Delphi and will have to re-add *all* your favourite extra components. You have been warned!



➤ An example of TAdRock3DCalendar in use

Send In Your Code...

If you have some carefully crafted routines, why not send them in by mail or (zipped up) by CompuServe email (to 70630,717) marked for the attention of the Editor. We can't *guarantee* we will use them, but we do consider *all* submitted files for inclusion on future free disks.